

SECTION 9

Filed Nov 27 1895

SECTION 8

SECTION 15

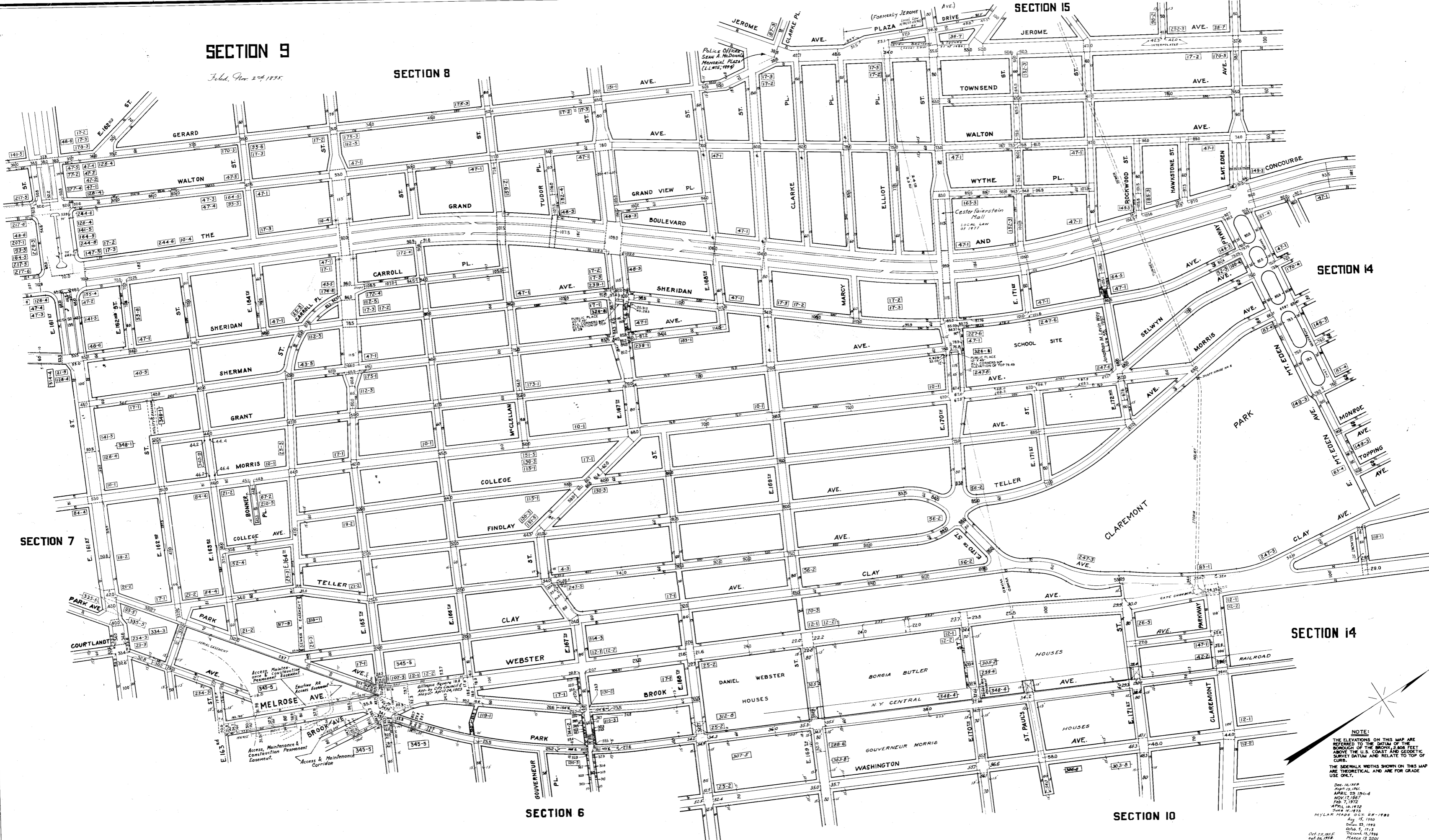
SECTION 14

SECTION 7

SECTION 14

SECTION 6

SECTION 10



NOTES:
 THE ELEVATIONS ON THIS MAP ARE REFERRED TO THE DATUM OF THE BENCH MARK 2.80 FEET ABOVE THE U.S. COAST AND GEODETIC SURVEY DATUM AND RELATE TO TOP OF CURB.
 THE SIDEWALK WIDTHS SHOWN ON THIS MAP ARE THEORETICAL AND ARE FOR GRADE USE ONLY.

Dec. 16, 1898
 Sept. 10, 1901
 APRIL 23, 1904
 NOV. 17, 1907
 Feb. 7, 1912
 APRIL 10, 1912
 JUNE 19, 1913
 MYLAN PLATS OCT. 25, 1920
 Aug. 15, 1920
 JULY 23, 1922
 OCT. 5, 1923
 Oct. 22, 1925
 APR. 20, 1926
 OCT. 28, 1928

Dec. 15, 1920
 OCT. 15, 1923
 Dec. 17, 1926
 March 12, 1929
 Aug. 3, 1930