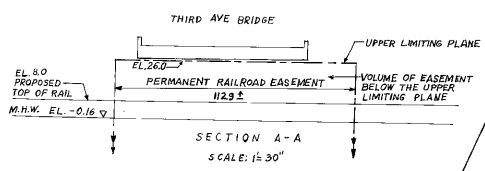
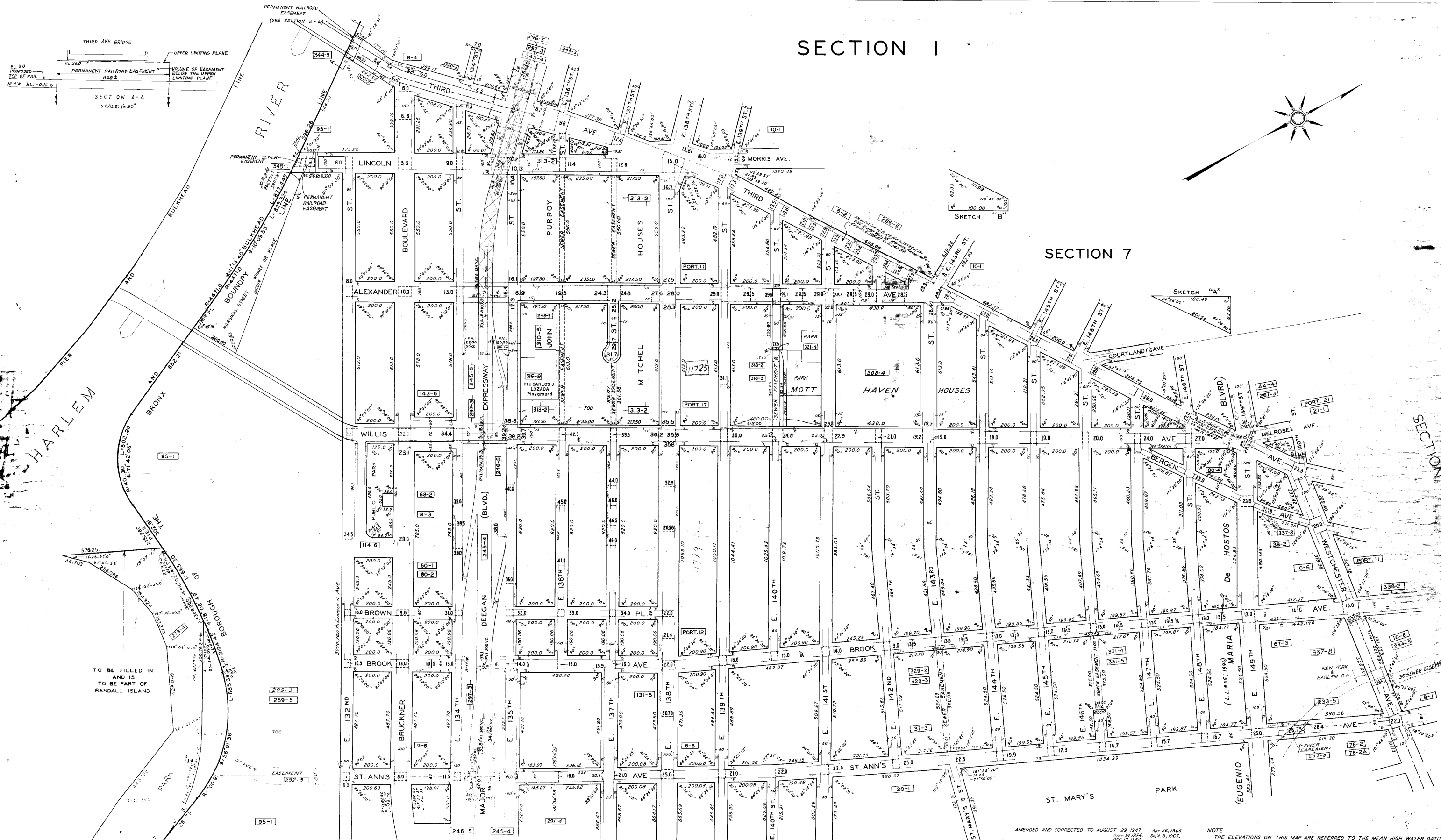


SECTION 1

SECTION 7

SECTION 2

SCALE=150 FEET TO ONE INCH



TO BE FILLED IN
AND IS
TO BE PART OF
RANDALL ISLAND

AMENDED AND CORRECTED TO AUGUST 29, 1947

APR 24, 1954	APR 26, 1965
MAY 17, 1954	SEPT 9, 1965
MAY 14, 1955	APR 11, 1968
MAY 10, 1956	SEP 16, 1970
MAY 10, 1957	MAY 18, 1975
MAY 10, 1958	MAY 27, 1975
MAY 4, 1960	MAY 5, 1975
MAY 24, 1964	OCT 27, 1992

NOTE
THE ELEVATIONS ON THIS MAP ARE REFERRED TO THE MEAN HIGH WATER DATUM OF THE BOROUGH OF THE BRONX, 2.608 FEET ABOVE THE U.S. COAST AND GEODETIC SURVEY DATUM AND RELATE TO TOP OF CURB.
THE SIDEWALK WIDTHS SHOWN ON THIS MAP ARE FOR GRADE LOCATION USE ONLY.

CHECKED BY: J.M.